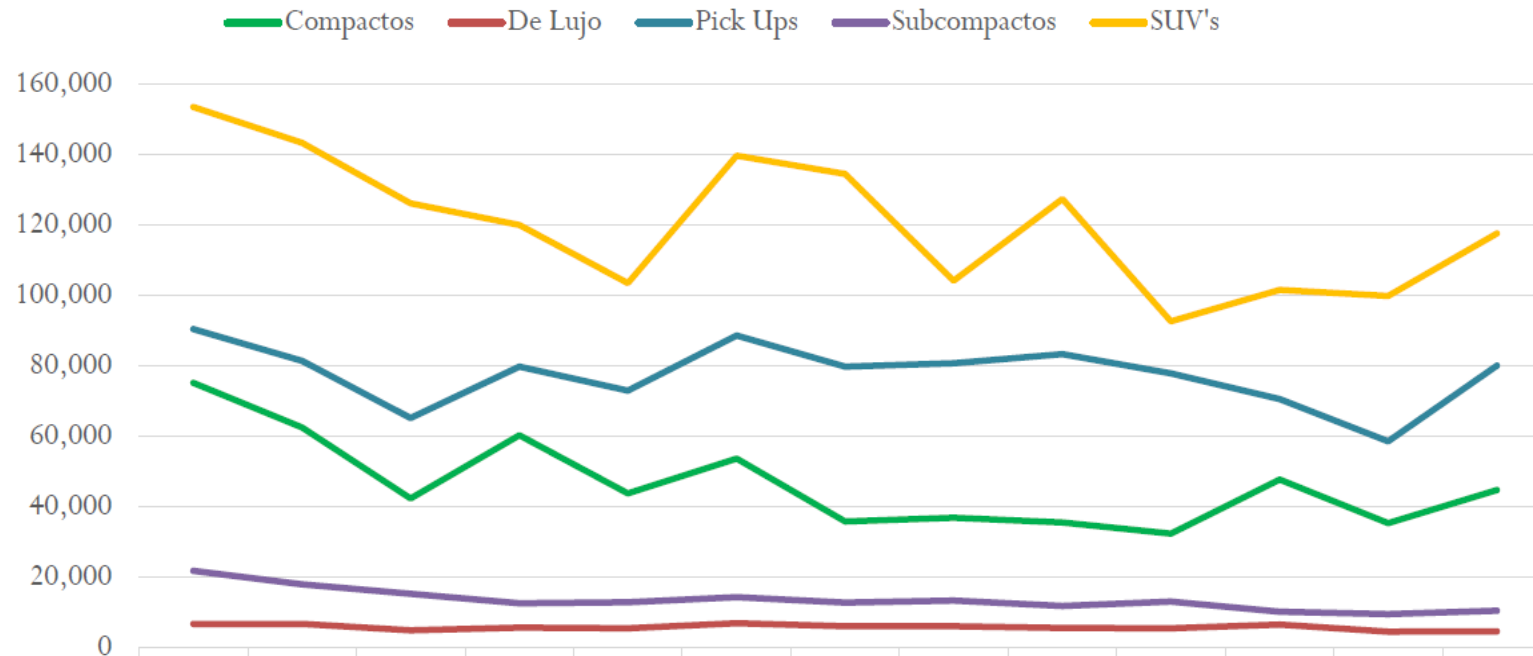


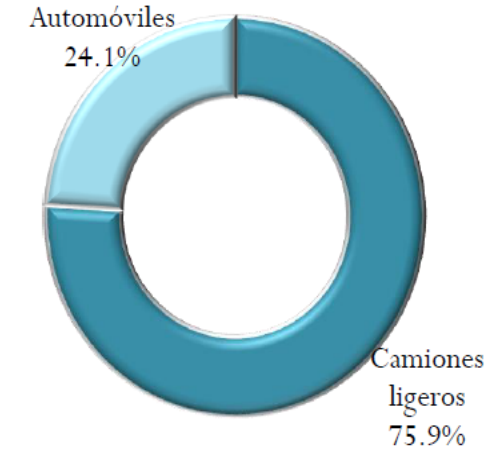
## Producción mensual de vehículos ligeros por segmento



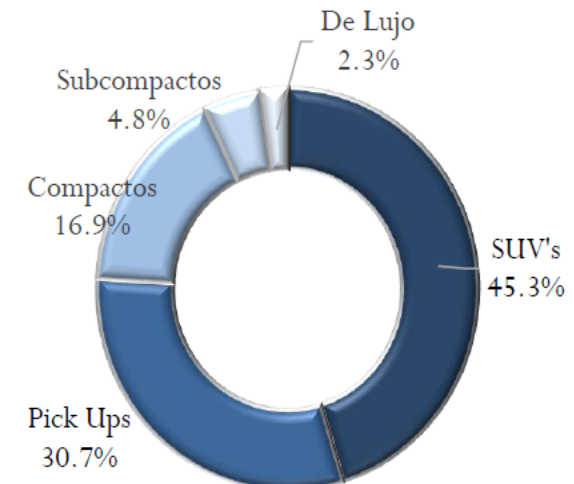
	oct-2020	nov-2020	dic-2020	ene-2021	feb-2021	mar-2021	abr-2021	may-2021	jun-2021	jul-2021	ago-2021	sep-2021	oct-2021
Compactos	75,182	62,531	42,424	60,383	43,851	53,751	35,879	36,940	35,583	32,409	47,811	35,396	44,803
De Lujo	6,840	6,823	5,014	5,777	5,636	7,074	6,144	6,143	5,656	5,641	6,661	4,635	4,719
Pick Ups	90,484	81,431	65,226	79,848	72,973	88,681	79,795	80,753	83,364	77,888	70,614	58,645	80,082
Subcompactos	21,930	18,078	15,418	12,655	12,938	14,418	12,847	13,465	11,969	13,192	10,343	9,595	10,611
SUV's	153,470	143,321	126,169	120,048	103,470	139,621	134,515	104,141	127,383	92,713	101,610	99,821	117,598
Total	347,906	312,184	254,251	278,711	238,868	303,545	269,180	241,442	263,955	221,843	237,039	208,092	257,813

### Enero-octubre, 2021

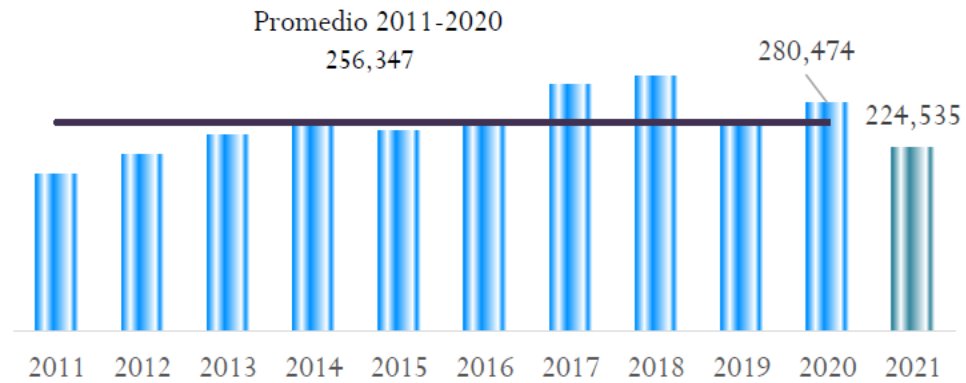
#### Por tipo



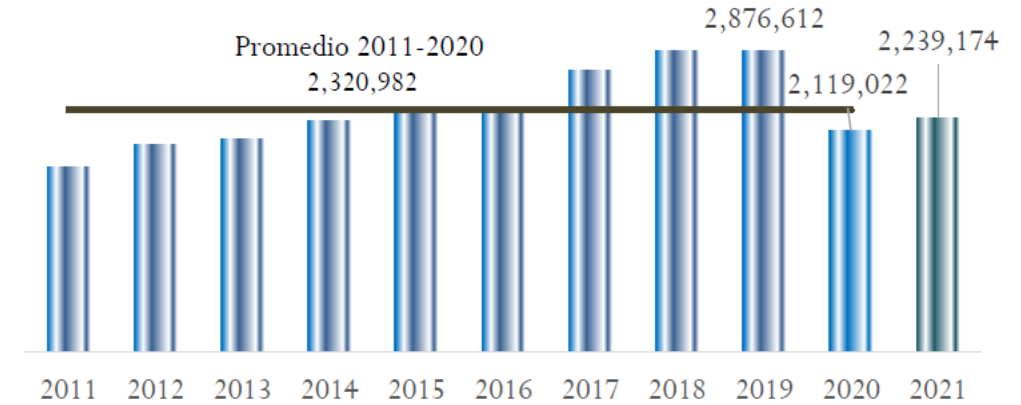
#### Por segmento



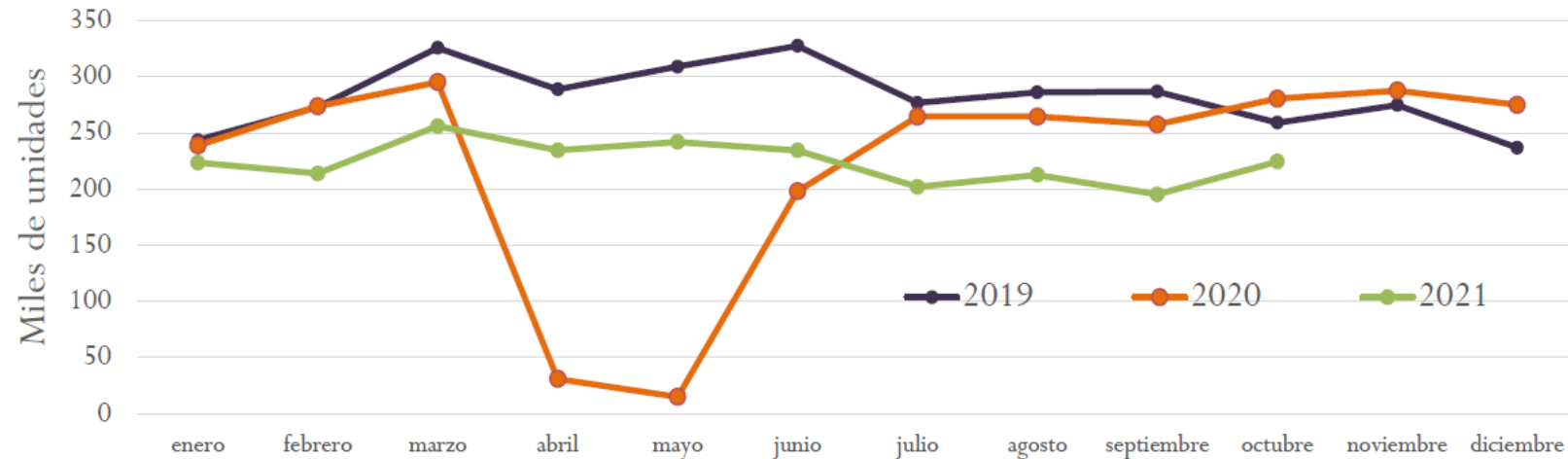
## Octubre de cada año



## Enero-Octubre de cada año



## Mensual



Oct-2021 vs.	Var. Abs.	Var. Rel.
Oct-2020	-55,939	-19.9%
Oct-2019	-34,623	-13.4%
Prom. 11-20	-31,812	-12.4%

Ene-Oct-2021 vs.	Var. Abs.	Var. Rel.
Ene-Oct-2020	120,152	5.7%
Ene-Oct-2019	-637,438	-22.2%
Prom. 11-20	-81,808	-3.5%